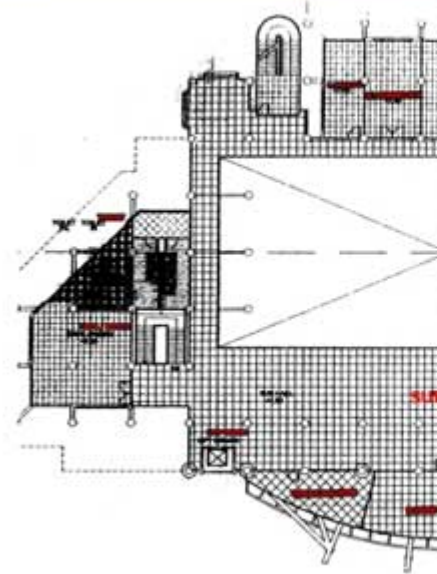
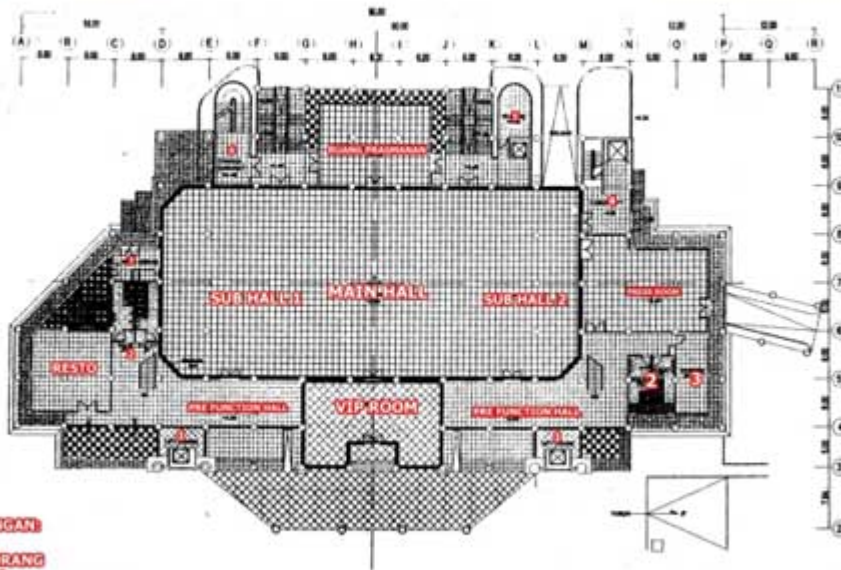


## Layout

Last Updated Thursday, 19 June 2014 13:05

---

# LAY OUT CONVENTION HALL SLO



**KETERANGAN**

- 1. LIFT ORANG
- 2. TOILET
- 3. INFORMATION ROOM
- 4. CARGO LIFT
- 5. GUDANG
- 6. TANGGA DARURAT
- 7. AREA SERVIS

DENAH LANTAI 1  
SKALA 1 : 200

DENAH  
SKALA 1 : 200

## Ukuran Hall

### Lantai 1

- ☞ Main Hall (R. Utama) + Sub Hall (R. Tambahan) : 3.238 m<sup>2</sup>
- ☞ Vip Room : 393,6 m<sup>2</sup>
- ☞ Ruang Prasmanan : 393,6 m<sup>2</sup>

### Lantai 2

- ☞ Sub Hall (R. Tambahan) : 1.248 m<sup>2</sup>
- ☞ Ruang Pengelola 1,2,3 : 560 m<sup>2</sup>
- ☞ Balkon (Teras) : 462 m<sup>2</sup>

Tinggi Atap : 11-15 M

Toilet : Laki-laki

AC : Terpusat Ruangan

Daya Listrik : 5500 Kw

Alat Penunjang : Stop Kor

## Fasilitas

1. Ruang rapat

2. Lampu penerangan

7. Lift <sup>2/3</sup>

8. Damed

